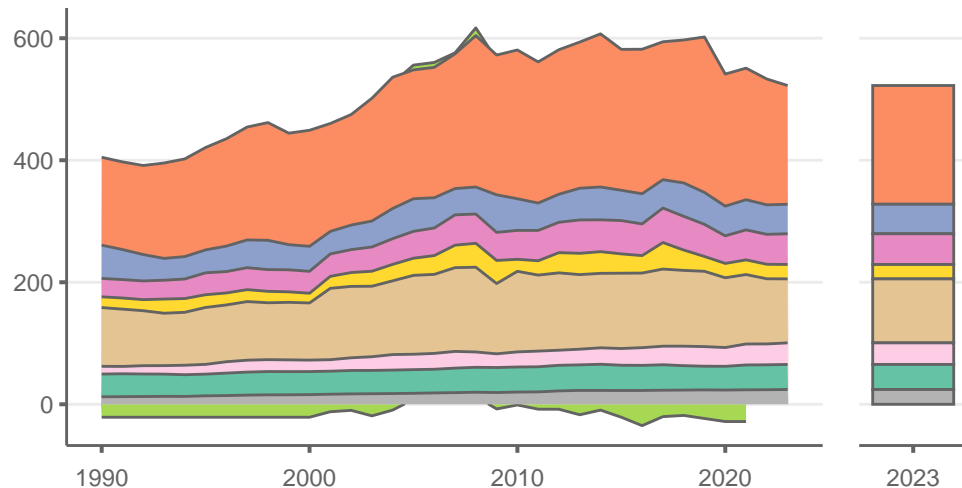
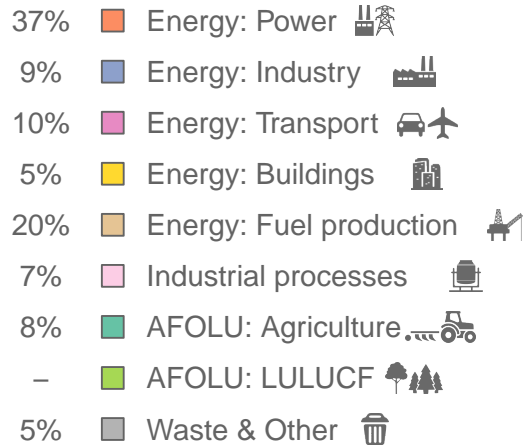


South Africa

Greenhouse gas emissions (MtCO₂e/year)



Sectors & shares of gross emissions in 2023



South Africa released an estimated 522 MtCO₂e in 2023 (excl. LULUCF), a change of -2 % compared to the previous year. Per capita GHG emissions were 8.6 tCO₂e in 2023. Cumulative CO₂ emissions since 1850 were 26.8 GtCO₂, or about 1% of global emissions to date. Sources: EDGAR v9, GCB 2023, UNFCCC, Grassi et al. 2021